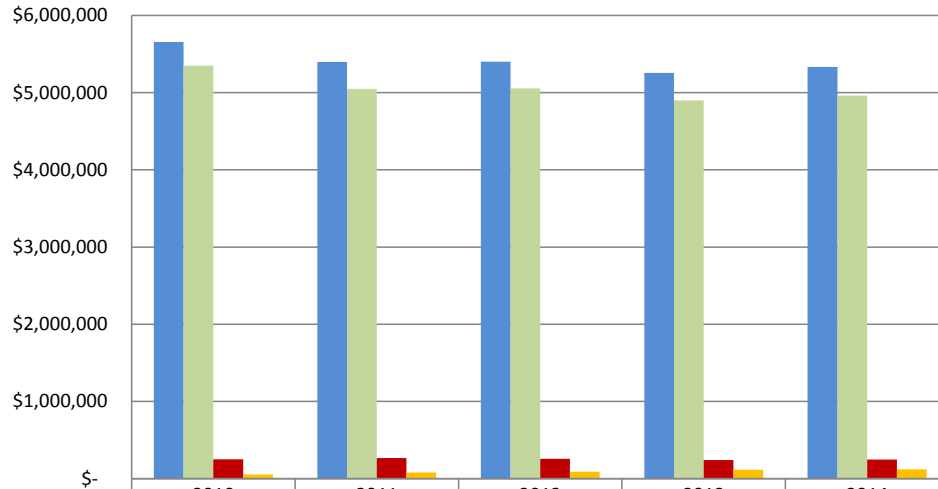


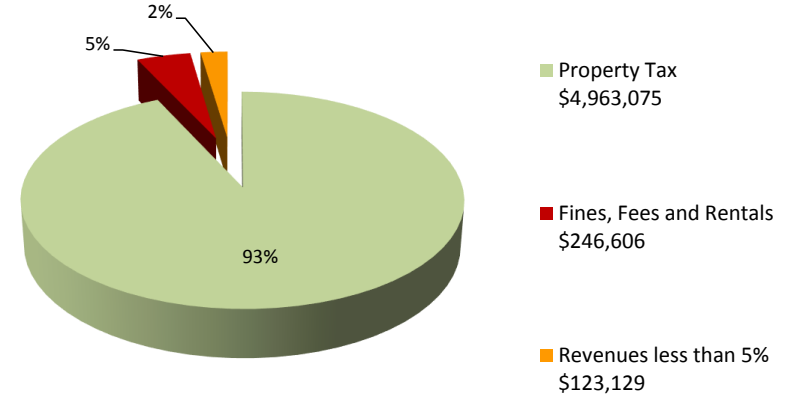
Canton Public Library Revenue

(The majority of the library revenue comes from property taxes. Revenue of less than 5% of the total budget is highlighted in the graph below)

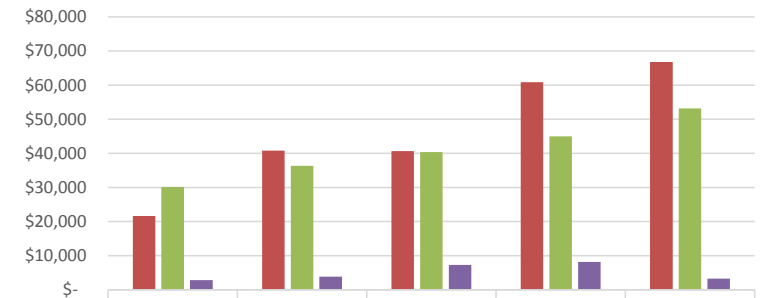


	2010	2011	2012	2013	2014
■ TOTAL REVENUE	\$5,656,534	\$5,397,178	\$5,400,990	\$5,256,156	\$5,332,810
■ Property Tax	\$5,349,475	\$5,048,190	\$5,054,411	\$4,899,602	\$4,963,075
■ Fines, Fees and Rentals	\$252,411	\$267,980	\$258,251	\$242,496	\$246,606
■ Revenues less than 5%	\$54,648	\$81,008	\$88,328	\$114,058	\$123,129

2014 Revenue



Revenue Less Than 5% by Category



	2010	2011	2012	2013	2014
■ Contributions and Donations	\$21,662	\$40,816	\$40,642	\$60,860	\$66,743
■ State Aid	\$30,126	\$36,373	\$40,383	\$45,001	\$53,147
■ Interest on Investments (excludes Endowment)	\$2,860	\$3,819	\$7,303	\$8,197	\$3,239

* Revenue and Expenditures on graphs are from the annual financial reports as audited by Plante Moran